



California Native Plant Society  
Santa Clara Valley Chapter

# ***THE BLAZING STAR***

*March-April 2013*

## **GENERAL MEETING & PROGRAM**

**Friday, March 22 at 7:30 PM  
Los Altos Library Program Room  
13 So. San Antonio Road, Los Altos**

**Bay Area Butterflies and  
the Native Plants They Most Need,  
a talk by Liam O'Brien**

Liam O'Brien's life shifted forever when a tiger swallowtail flew into his yard in San Francisco in 2007. Trained as a stage actor, his art and energies were redirected into illustration, conservation and activism. He brought the idea of "**The Green Hairstreak Project** - the Restoration of a Vanishing Butterfly's Ecosystem" to Nature in the City in 2008, spearheaded efforts to restore Mission Blues back to Twin Peaks, and has had a highly successful career as a painter of interpretive trail signs for San Francisco's Rec & Parks Department.

O'Brien surveyed all the breeding populations of butterflies in San Francisco County in 2007 and again in 2009. His talk to our Chapter goes through the 34 species and connects native host plants to what folks can do to benefit the creatures in their gardens. His field guide will be available at the end of the talk. It contains paintings and scaled rendering of species that will visit Bay Area yards.

His first book (co-authored with Matt Zlatunich) "**The Butterflies of the Presidio**," was published by the Presidio Trust in the fall of 2012. He is currently on the Board of Directors for the Yerba Buena Chapter of CNPS.

**Directions:** From Foothill Expy., travel ½ mile on San Antonio Rd. towards the Bay, cross Hillview and turn right into the driveway; the library is on the left. From El Camino, travel towards the hills on San Antonio Rd., cross Edith and turn left into the unmarked driveway just before Hillview. The sign on San Antonio Rd. reads "Civic

Center, Library and History Museum." Enter through the lobby of the main entrance.

CNPS general meetings are free and open to the public. For more information, contact Stephen Rosenthal at sailinsteve@sbcglobal.net or the Chapter phone (650) 260-3450.



## **Spring Native Plant Events!**

See the enclosed flyers to learn about our Chapter's events:  
**Going Native Garden Tour** – April 20-21  
**Spring Wildflower Show** – April 27-28  
**Spring Native Plant Sale** – May 4

## **CHAPTER ACTIVITIES**

### **Native Plant Sale May 4 at Hidden Villa 10am - 3pm; Call for Volunteers**

Our Spring Native Plant Sale will be held on Saturday, May 4, from **10am to 3pm** at our Hidden Villa nursery. Once again we're asking everyone who can to come and help with the sale. Most of the jobs listed below don't require expert knowledge of plants, and **you can choose to work one or two hours** or all day.

Before the sale, you may help prepare the nursery at three special nursery workdays, including labeling plants and weeding the garden outside the nursery. We'll work from **noon to 3pm** on **Wednesday, Thursday, and Friday, May 1, 2, and 3**. On the day of the sale, we will need people to:

- Help set up before the sale (**starting at 8am**)
- Help with parking

- Answer customers' questions about the plants and help them decide which plants to purchase
- Write up the sales tags before customers go to the cashiers to pay for their plants
- Work as cashiers
- Help customers take their purchases to their cars and bring back the wagons and carts to the nursery
- Help clean up after the sale (3-4pm)

The plant sales are always lots of fun to work at, and we provide **lunch** to volunteers. To volunteer on sale day please contact:

**Horticultural consultation:** Ray Deutsch (650) 365-6136, ray.deutsch@yahoo.ca

**Writing sales tags & cashiering:** Georgia Stigall (650) 941-1068, georgiastigall@yahoo.com

**Parking director:** Carolyn Dorsch (650) 804-6162 (evenings) or cdorsch1@aol.com

**Miscellaneous:** Jean Struthers (650) 941-2586 or JeanStruthers@att.net; or Melanie Cross (650) 947-1325 or Melanie@pcross.com

After the sale, we'll resume our usual **Wednesday and Thursday nursery workdays, from noon to 3pm.**

**Directions:** Hidden Villa is located on Moody Road west of Foothill College. From I-280 in Los Altos Hills, take the Moody Road exit and head west. Two miles west of Foothill College, look for the Hidden Villa sign and driveway on the left. Proceed over the bridge, and drive about ¼ mile to the large parking lot on the right. The Native Plant Nursery is at the greenhouse just beyond the visitor center. On the day of the plant sale, follow the directions of the parking monitors as to where to park.

## Gardening with Natives

Gardening with Natives (GWN), a special interest group within the Chapter, includes a mix of landscape architects, designers, seasoned native plant gardeners and beginners. It offers many talks throughout the year which are free and open to all.

This year's theme is *Native Plant Vignettes*, where monthly presenters share how to design discrete areas of your garden, such as shady locations or meadows. **Three talks are scheduled during March and April**, so please spread the word. For more information, visit [www.GardeningWithNatives.com](http://www.GardeningWithNatives.com).

These programs are made possible by volunteers who help with program logistics and by co-sponsoring libraries. If

you would like to help organize similar programming at a library near you, contact arvind.kumar@cnps.org.

### Planting a Berm with Native Plants, a talk by Deva Luna

**Wednesday, March 6, 7:00 PM, Los Altos Library**  
13 S. San Antonio Road, Los Altos (650) 948-7683

A berm is a mound of soil included in a garden to add interest, to use up extra soil, and to provide additional drainage for plants that need it. During the construction of new paths and patios, there is often leftover soil that can either be sent to the dump or used onsite. Find out how to create a berm to make a focal point for your garden and use it to grow native plants that like well-drained soil.

**Deva Luna** is a sustainable and Bay Friendly-certified landscape designer who has been teaching and speaking about horticulture for 15 years. She has a degree in "Plants and Art" and works for EarthCare Landscaping in Cupertino. Her passions include California native plants, grey water, edible landscaping, herbs, and "quirky yard art."

### Rain Gardens for Native Plants, a talk by Laura Prickett

**Monday, April 8, 7:00 PM, Milpitas Library**  
160 N Main Street, Milpitas (408) 262-1171, ext. 3616

The last of the season's rains are pouring down, running off your roof, down your driveway, into the streets, storm drains, creeks, and ultimately to the bay or ocean. What if you could capture that runoff instead and use it for your garden? Rain gardens are a great way to do just that. Find out what they are, how they can help protect water quality and reduce creek erosion, what to consider for rain garden design and construction, and which California native plants are most suitable for them.

**Laura Prickett**, of EOA, Inc., has 17 years of environmental planning and project management experience. She is the principal author of technical guidance manuals regarding storm water controls for development projects in San Mateo County and Alameda County.

### Gardening, Cooking, and Healing with Native Plants, a talk by Alicia Funk

**Wednesday, April 24, 7:00 PM, Cupertino Community Hall, 10350 Torre Avenue, Cupertino (408) 446-1677**

Modern life depends on plants from all over the world, but the native people of California lived sustainably for thousands of years by using only local California native plants. The author of the landmark new book *Living Wild: Gardening Cooking and Healing with Native Plants of California* will show you how to grow, harvest, and incorporate California native plants in your day-to-day life. Snacks will be available to sample.

**Alicia Funk** has an MBA and has twenty years of expertise in the field of natural living and wellness. She is the editor of six books, including *The Botanical Safety Handbook*, *Herbal Medicine*, *The Expanded Commission E Monographs* and *The ABC Clinical Guide to Herbs*.

### Keying with Natives

Join us as we learn and practice methods of identifying the native plants of our region (aka keying). From beginners to more advanced, there are challenges for all. Bring in plant samples if you have some or just come and work with the materials provided. We discuss the various plant books and practice keying with them. Microscopes are also available.

The next meeting dates are **Fridays, March 29 and May 3, from 6:30pm - 8:30pm**. (Note the April 26 meeting has been moved to May 3, since the Wildflower Show setup will be on April 26.) We meet at the Peninsula Conservation Center (PCC), 3921 E. Bayshore Road in Palo Alto. For more information, please contact Dave "Tex" Houston at 350co2now@gmail.com or (650) 303-2777; or Sally Casey at (408) 377-0989.

**Directions to PCC:** From Hwy. 101 **southbound**, take the San Antonio Rd. North exit, follow the cloverleaf around and across 101, get immediately into the left-hand turn lane, and turn **LEFT** onto East Bayshore. From Hwy. 101 **northbound**, take the San Antonio exit and make a right at the light onto San Antonio Rd. Immediately get into the left-hand turn lane and turn **LEFT** onto East Bayshore.

East Bayshore will curve around to the left, then right. Turn right on Corporation Way. Your next left is the entrance to the PCC parking lot. The meeting rooms are on the first floor.

### Conservation Committee: LIVECoRPs

We are off to a great start in the New Year:

1. Advocacy: We passed the Habitat Conservation Plan (see Conservation News below) with a few details to be

worked out with San Jose. This is a HUGE accomplishment. Thanks to Kevin Bryant for his tireless efforts representing us for **8 years!**

2. Rare Plants: Toni Corelli has increased participation in rare plant monitoring by combining documentation of rare plant populations with Chapter field trips. (Her assistants were trained previously at her Documentation Workshops). More training sessions are planned for this important work.
3. Invasives: Debra Welch and others are working with other agencies in our State *Weed Management Area* to coordinate our efforts for maximum effectiveness.
4. Advocacy: We and other environmental agencies are working with Google, Facebook and Apple on increasing the number of native plants included, increasing the habitat value and decreasing environmental impacts as they design their new campuses.

### Upcoming Efforts

Weed Day at the Capital: We will be joining advocates from all over the state in Sacramento for this annual event put on by CAL-IPC (California Invasive Plant Council.) Presentations on invasive weed management will be given in the morning. We will visit legislators in the afternoon advocating for money to fight invasive weeds. We will car pool. Please join us!

**One person can make a significant impact.** Please come to our upcoming meetings. We meet on the **third Tuesday of the month, 7pm** at the Peninsula Conservation Center in Palo Alto (PCC). Our next meetings will be **March 19** and **April 16**.

For questions, comments or concerns please contact LIVECoRPs Chair Linda Ruthruff at ldruff@hotmail.com. For **directions** to the PCC, please see the Keying with Natives article above.

### Student Research Scholarships – Applications due April 6

Our Chapter of CNPS is offering scholarships to students doing research on native plant or plant community conservation, plant ecology, plant community restoration, plant systematics, or other related botanical studies of native plants that grow in habitats in Central and Northern California. Students researching topics related to native plant and native habitat conservation in the San Francisco Bay Area are encouraged to apply.

Academic scholarships of \$1,500 for graduate student research and a **\$1,000 scholarship for undergraduate student research** are available. This is the Chapter's first year offering an undergraduate research scholarship.

Additional information and applications are available on the Chapter website [www.cnps-scv.org](http://www.cnps-scv.org) under the Education and Scholarships menu or contact Nora Monette at [nmonette@aol.com](mailto:nmonette@aol.com).

## **CONSERVATION NEWS**

### **San Jose Adopts HCP**

The City Council of San Jose adopted the Santa Clara Valley Habitat Conservation Plan (HCP) at the end of January 2013. They were the last local partner public agency to do so. The County of Santa Clara, the Santa Clara Valley Water District, the Cities of Morgan Hill and Gilroy, and the Santa Clara Valley Transportation Authority (VTA) had approved the Plan over the last several months. Adoption means that funds can flow and steps can be taken to insure the protection of rare plants and wildlife on Coyote Ridge and elsewhere in the southern Santa Clara County.

Chapter members Linda Ruthruff, Pat Pizzo, and Don Mayall spoke at the San Jose City Council meeting. This is a culmination of twenty years of work by Chapter members, including some eight years by Kevin Bryant representing us on the Stakeholders Group. Many Chapter members signed postcards illustrated with Stuart Weiss' photographs of Coyote Ridge supporting the Plan to city council members. Many thanks are due all for their efforts.

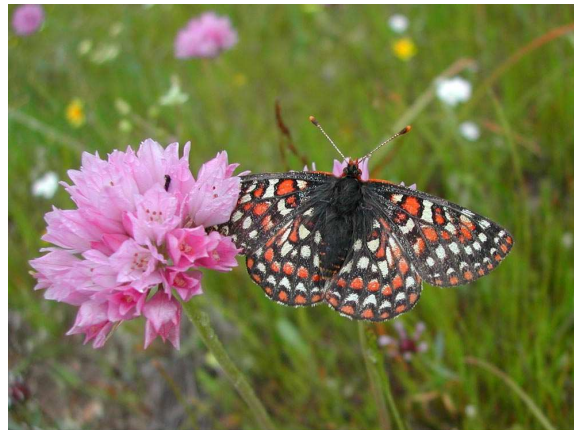
The plan will generate \$665 million over the course of 50 years, to acquire and manage 46,000 acres of open space lands. This will include habitats for such rare plants as the Santa Clara Valley dudleya, Metcalf Canyon jewelflower, coyote ceanothus and Tiburon Indian paintbrush, as well as such animals as the Bay checkerspot butterfly and the California red-legged frog.

As victory in securing protection for Edgewood Preserve was in sight, the Chapter began focusing on the serpentine area south of San Jose that came to be known as Coyote

Ridge. At that time the entire area was in private hands, with some 250 acres leased temporarily as a mitigation for the impacts on butterfly habitat of the Kirby Canyon landfill. Chapter members began gathering data, leading field trips to the ridge and formed a coalition with other environmental organizations to explore ways of protecting this remarkable plant habitat. As a result of our educational efforts, land acquisition began and some 1000 acres were preserved as public agencies such as the VTA and the Water District bought land for mitigation purposes. But it was clear that more land needed to be preserved.

The Habitat Conservation Plan, a federal program for protecting rare species, combined with the state's Natural Communities Conservation Program (NCCP), provided opportunities to make further acquisitions. Development of this plan began nearly ten years ago when the widening of Hwy. 101 was undertaken, and the wildlife agencies and local officials recognized that multiple threatened and endangered species could be impacted by this work.

Under this program, permitting for development is streamlined in exchange for fees to fund meaningful conservation actions such as acquisition and management of lands containing rare and endangered species. (For more information about this very complex plan, and to view or download the final document, go to [www.scv-habitatplan.org](http://www.scv-habitatplan.org).)



Stuart Weiss  
Bay checkerspot butterfly (*Euphydryas editha bayensis*) on *Allium serra* at Coyote Ridge

A coalition of environmental groups called Habitat Conservation Now was formed to help public officials understand and adopt the plan. The coalition included CNPS, the Sierra Club, the Audubon Society, the Committee for

Green Foothills, the Greenbelt Alliance and the Nature Conservancy. The votes needed by the public agencies to adopt the plan, including the recent vote by the City of San Jose, were the culmination of these efforts.

Many of the details of Plan Implementation still need to be worked out, but the framework of the Plan has been approved. The challenge that faces us now is to continue working with our coalition partners, local government, and the wildlife agencies on the details of implementation, and to make sure the Plan protects and enhances our plant communities and the rare species habitats they contain.

## CHAPTER SERVICE OUTINGS

### **Edgewood Weed Warriors 25 Years Young!**

Our volunteer restoration program at Edgewood Park has made *huge* gains over the years... and at the same time there's still *so much* we can do to make Edgewood an inspirational showcase of all CNPS stands for! We hope you'll join us this season, our 25th, as we continue our efforts and celebrate being *25 Years Young* ... come pitch in... have some fun... and learn a ton!

Our **9am Friday** sessions run year round; **5:30pm Wednesday** sessions start **March 13** after Daylight Savings Time returns; and monthly **9am Saturday** sessions are on the **3rd Saturdays of March thru July**, plus National Public Lands Day in September. Here's our upcoming Saturday schedule:

Date	Meet At	Event Theme
Mar 16	Day Camp Kiosk	Spring "Saturday Kickoff"
Apr 20	Day Camp Kiosk	Earth Day and CA Native Plant Week
May 18	West Kiosk	Endangered Species Day and International Day for Biodiversity
Jun 15	West Kiosk	Ken Himes Day!
Jul 20	West Kiosk	CA Weeds Awareness Week
Sep 28	West Kiosk	National Public Lands Day

On **Saturday, March 2**, you can join our Friday session leader Paul Heiple for a Chapter field trip celebrating our restoration progress at Edgewood and looking at what's still to be done. See the Field Trips section, next, for details.

For Edgewood Weed Warrior (EWW) schedules, meeting places, and other details you can: visit [edgewood.thinkersrus.net](http://edgewood.thinkersrus.net), contact Paul Heiple at (650) 854-7125 or [pheiple@gmail.com](mailto:pheiple@gmail.com); email John Allen at [jcakwa@comcast.net](mailto:jcakwa@comcast.net) for Friday info; or contact EWW program chair Drew Shell at [shell@corp.webtv.net](mailto:shell@corp.webtv.net) for Wed/Sat information.

## CHAPTER FIELD TRIPS

Chapter field trips are free and generally open to the public. They are oriented to conservation, protection and enjoyment of California native plants and wildlife, and we adhere to all rules and guidelines for the lands on which we are visiting.

**In our region it is very important to be prepared for hiking on rugged and steep terrain, wide temperature ranges and rapidly changing conditions at any time of year. All participants should wear sturdy footwear and carry sufficient water, sun protection, food, clothing layers, personal first aid and other supplies you may need. If you have any questions about your ability to participate in a particular field trip, please contact the trip leader in advance.**

### **Document Rare Plants on Chapter Field Trips**

Join the Rare Plant Committee members on our upcoming field trips to document rare plants in San Mateo and Santa Clara Counties. We will be tagging along with field trip leaders to various locations on February 23rd, March 31st, April 13th and May 18th. To sign up contact Toni Corelli at [corelli@coastside.net](mailto:corelli@coastside.net)

### **Sat Mar 2 Edgewood County Park & Natural Preserve (Redwood City) 9:30am - 3:30pm**

Edgewood County Park is one of our chapter's oldest conservation projects. The battle to save Edgewood from becoming a golf course has long since been won and the land is secure from any development. The continuing project that our chapter owns is the restoration weeding.

This coming year marks the 25th year since the invasive removal project began. The progress is amazing. Come see the project and the work remaining to be done. Friday lead-weeder, Paul Heiple, will lead you through the sites and show the work being done and plans for the future removals in the park. We should also see some beautiful early wildflowers that are normally finished by the time the regular docent lead hikes begin.

The hike will begin from the Clarkia Trail on Canada Road at **9:30am**. The hike will be limited to 30 people. Call Paul at (650) 854-7125 or e-mail [pheiple@gmail.com](mailto:pheiple@gmail.com) to **reserve your spot** and receive instructions on how to get to the trailhead.

### **Sun Mar 3 San Bruno Mountain (Brisbane) 10am - 3:30pm**

Join Ken Himes for a hike along the Summit Loop Trail to see early flowering plants in the coastal scrub and coastal grassland plant communities. The hike will be about 3.5-4 miles long with 800 feet elevation gain/loss. Wear layers as windy conditions could occur. Bring lunch and liquids. For more information call Ken at (650)591-8560.

**Directions:** From Hwy. 101 northbound, take Old Bayshore/Brisbane exit and proceed north on Old Bayshore, past the town of Brisbane. Make a left turn onto

Guadalupe Canyon Pkwy. and follow it uphill (west) about a mile and a half to the park entrance. We will meet at the parking lot just beyond the entrance kiosk. There is a \$6.00 day use/parking fee (bring exact change).

### Wed Mar 20 Pinnacles National Park (San Benito County) 10am – 4pm

Join Stella Yang, Vicki Silvas-Young, Kenny Hickman and Paul Heiple for a visit to an area newly elevated to National Park status. Our walk will be just under 7 miles with an elevation gain of 1,425 feet. The trail in places is variously narrow, steep and rocky, and has a series of steps hewn into the rock.

The scenery is out of this world. We expect to see shooting stars, bitterroot, milk maids and other early spring flowers and may spot soaring California condors. Paul will give us an introduction to the geology of the area.

The pace will be moderate, NOT our CNPS Chapter's more common leisurely stroll. Dress in layers. Sturdy shoes are a must and trekking poles may be useful. Bring plenty of water, lunch and snacks.

Reservations are required. Actual time in the Park will be from **10am to 4pm**. The Pinnacles are a 45-minute drive from Hollister and Hollister is about a two-hour drive from the South Bay. This will be a long day trip. Please contact Stella Yang at (408) 255-6233 or yscottie@pacbell.net; or Vicki Silvas-Young at (408) 807-6993 for more info., including the meeting place and to **reserve your spot**.

### Sat Mar 23 Bonny Doon Ecological Reserve (Santa Cruz County) 10am – 4pm

The Martin Fire in 2008 radically changed this Santa Cruz County gem, home to many rare plant species as well as other species living near or at their range limit. Join Kevin Bryant on a journey through this living laboratory of post-fire plant succession, and see how the scorched landscape is being reborn.

The Reserve contains sandhills, sandstone outcrops, and other geologic assemblages that are uncommon in our area; the unique plants and plant communities that grow here have evolved in response to these substrates and to periodic wildfires.

We expect to see the rare Santa Cruz cypress (*Hesperocyparis abramsiana* var. *abramsiana*), four species of manzanita, and lots of ceanothus (two species plus hybrids, hopefully some in flower). Other botanical surprises are also likely to be found here, and we might be lucky enough to spot some of the interesting animal life that lives here as well.



Avis Boutell

Volunteers survey woolly-headed lessingia (*Lessingia hololeuca*) along the Edgewood Trail in September 2012

Hiking at Bonny Doon can be a bit tricky these days due to tree falls across the trails, so be prepared for some minor scrambles over logs and debris. Also, parts of the hike will be through deep sand. Expect a slow-paced hike approx. 5 miles with 400 feet of elevation gain/loss. Bring lunch and liquids. There are no restroom facilities at the Reserve.

The trip is limited to 15 participants, and is open

to CNPS members only. New memberships will be accepted at the trailhead. For more information, or to **reserve your spot** and receive details about the trip, contact Kevin at mtngreen17@gmail.com, or (408) 348-9470.

### Sun Mar 31 Coyote Lake (Gilroy) 10am - 3:30pm

Join Stephen Rosenthal and Paul Heiple on this spring hike to Coyote Lake County Park. Located east of Gilroy and south of Coyote Ridge, like Coyote Ridge the Park features a beautiful serpentine area that is rich in wildflowers. On a recent trip there were lots of buttercups, cream cups, allium, red maids, tidy tips, butter & eggs and more.

The walk will be about 3 miles long with about 600 ft elevation gain. Bring plenty of water as temperatures could be warm, and snacks/lunch.

The trip is limited to 20 participants. To **reserve your spot** and receive directions by email, contact Stephen at sailinsteve@sbcglobal.net or (408) 923-6562.

**Thu – Tue Apr 4/5 – 8/9 (Dates TBD)****Desert Exploring Spring 2013**

Like it hot and prickly? Well then join Ken Himes, Joe Cernac and Kenny Hickman on a car camping run around the western Mojave and Owens Valley. We'll start in the stunning Red Rock Canyon State Park on Thursday or Friday, and then based on our team's pre-scouting, will visit spots such as Short Canyon, Fossil Falls, the Panamint Valley (for the rare, endemic 1B.2 Panamint daisy, *Enceliopsis covillei*), Desert Tortoise Natural Area, and the Alabama Hills.

On some nights we may be dry camping in tents/cars, but will also often be stopping at facilities along the way (did someone say Indian Wells Brewery for dinner?)

Please RSVP to Ken Himes at (650) 591-8560 or Kenny Hickman at ken@meer.net, and we'll send details as the season unfolds and our pre-scouting tells us where we should go! Note: Current CNPS membership is required.



Toni Corelli

Coastal Bluff scrub habitat at Rockaway Headlands

**Sat Apr 13 Rockaway Headlands (Pacifica), Moss Beach and Pillar Point Bluff (San Mateo Coast) 10am - 3pm**

Join botanist Toni Corelli for a leisurely coastal exploration. For the first 3 hours we will explore one of the best coastal prairie wildflower ecosystems along the northern San Mateo Coast. Some of the plants we will see are: Franciscan wallflower (*Erysimum franciscanum*), footsteps of spring (*Sanicula arctopoides*), coast onion (*Allium dichlamydeum*), goldfields (*Lasthenia californica*), narrow-leaved mule ears (*Wyethia angustifolia*), California oat grass (*Danthonia californica*) and seaside plantain (*Plantago maritima*).

The trail is an easy 1 mile loop. If you would like to continue we will drive south to Moss Beach to see the Coast yellow leptosiphon (*Leptosiphon croceus*), and harlequin lotus (*Hosackia gracilis*), then drive 2 miles south to see the rose leptosiphon (*Leptosiphon rosaceus*).

We expect the full trip to last until 3 - 3:30 pm. Bring lunch and liquids; dress in layers.

**Directions:** The parking area is located in Pacifica, approximately 13.3 miles north of Half Moon Bay. Heading west on Hwy 92 from the Peninsula, at Hwy 1 turn right (north), go approx. 13.3 miles north on Hwy 1. Then

turn left (west) on Rockaway Beach Ave., take the first left on Old County Rd. and drive to the end where you'll find the parking lot. To see plant photos visit [www.flickr.com/photos/tcorelli/sets/72157618750588498](http://www.flickr.com/photos/tcorelli/sets/72157618750588498).

**Sun Apr 14 New Hagen Meadow (San Jose)****9am - 2pm**

Visit and help identify spring wildflowers at this quiet serpentine meadow and seep in the shadow of Mount Umunhum. Join Judy Fenerty, Stella Yang and

Midpeninsula Regional Open Space District staff Cindy Roessler to explore this property off Hicks Road in the Sierra Azul Open Space Preserve. We expect to see the rare Mt. Hamilton thistle, most beautiful jewelflower, Santa Clara Valley dudleya, and leather oak, as well as many other native wildflowers and grasses.

We will hike 3 miles round-trip on country roads and old trails with moderate elevation gain and some off-trail hiking

once we reach the meadow. Access to the Mt. Hamilton thistle is down a steep slope, but there are plenty of serpentine wildflowers to enjoy without hiking to the seep. Public hiking trails and access have not been developed for this new property yet, so this **reservation-only hike** will provide a rare chance to visit the site. Bring lunch, sun protection, sturdy shoes, and hiking poles (if you have them).

**Directions:** We'll meet in San Jose at the Park-and-Ride lot at Hwy. 85 and Camden Ave. and then travel 6 mi. together to the locked pasture where we will park the cars. Logistics do not allow participants to arrive late or leave early.

We are offering priority to CNPS Santa Clara Valley Chapter members for this trip. Space is limited to 20 people and carpooling (no host) is strongly recommended to the meeting place. RSVP to Judy Fenerty at [judy@fenerty.com](mailto:judy@fenerty.com) or 408-378-6272 to **reserve your place**.

**DEADLINE FOR THE NEXT *BLAZING STAR***

**Saturday, April 6, 2013**

**Email: [mattsson@surfpix.net](mailto:mattsson@surfpix.net)**

**Phone: (408) 255-3767**

Santa Clara Valley Chapter California Native Plant Society  
3921 East Bayshore Road  
Palo Alto, CA 94303



## Join CNPS Today!

Members receive the *Fremontia*, the *Bulletin*, and the Chapter newsletter, and other benefits listed at [www.cnps.org/membership](http://www.cnps.org/membership)

Name \_\_\_\_\_

Address \_\_\_\_\_

City \_\_\_\_\_ State \_\_\_\_\_ Zip \_\_\_\_\_

Telephone \_\_\_\_\_

Email \_\_\_\_\_

Chapter \_\_\_\_\_

*Membership level (check one):*

- \$45 Individual  
 \$75 Family  
 \$100 Plant Lover  
 \$300 Patron  
 \$600 Benefactor  
 \$1500 Mariposa Lily  
 \$25 Student/Limited Income

*Areas of interest:*

- Advocacy  
 Botany  
 Conservation  
 Education  
 Field Trips  
 Gardening  
 Plant ID

*Donations above the membership level are gratefully accepted.*

*Dues and donations are tax-deductible. Make your check payable to "CNPS" and mail it with this form to:*

CNPS Membership, 2707 K Street Suite 1, Sacramento, CA 95816 • 916-447-2677 • fax 916-447-2727

## FIRST-CLASS

### CALENDAR OF EVENTS (page # in parentheses)

- Mar 2 Sat** Edgewood field trip – Heiple (5)  
**Mar 3 Sun** San Bruno Mountain field trip (5)  
**Mar 6 Wed** GWN – Planting a Berm – Luna (2)  
**Mar 16 Sat** Edgewood Weeding – Saturday Kickoff (5)  
**Mar 19 Tue** LIVECoRPs (conservation) meeting (3)  
**Mar 20 Wed** Pinnacles field trip (6)  
**Mar 22 Fri** General Meeting – O'Brien (1)  
**Mar 23 Sat** Bonny Doon field trip (6)  
**Mar 29 Fri** Keying with Natives (3)  
**Mar 31 Sun** Coyote Lake field trip (6)  
**Apr 4/5 – 8/9 Thu-Tue** Desert camping field trip (7)  
**Apr 6 Sat** Scholarship Applications due (3)  
**Apr 6 Sat** Newsletter Deadline (7)  
**Apr 8 Mon** GWN – Rain Gardens – Prickett (2)

- Apr 11 Thu** Chapter Board meeting  
**Apr 13 Sat** Rockaway Headlands - coast field trip (7)  
**Apr 14 Sun** New Hagen Meadow field trip (7)  
**Apr 16 Tue** LIVECoRPs (conservation) meeting (3)  
**Apr 20 Sat** Edgewood Weeding – Earth Day (5)  
**Apr 24 Wed** GWN – Cooking, HealingFunk (2)  
**Apr 24-25 Sat-Sun** Going Native G. Tour – see flyer  
**Apr 25 Thu** Newsletter Mailing Party - 10am PCC  
**Apr 27-28 Sat-Sun** Wildflower Show – see flyer  
**May 1-3 Wed-Fri** Special Sale Nursery Workdays (1)  
**May 3 Fri** Keying with Natives (3)  
**May 4 Sat** Native Plant Sale – Hidden Villa (1)  
**Wed & Thu afts.** Nursery work sessions (1)  
**Fri morns., Wed eves.** Edgewood Park weeding (5)

The next Chapter **Board meeting** will be **Thu., April 11 at 7:00pm** at the PCC, 3921 E. Bayshore Road in Palo Alto.

Chapter Board meetings are open to all Chapter members and their guests.

For more information contact Stephen Rosenthal at [sailinsteve@sbcglobal.net](mailto:sailinsteve@sbcglobal.net).

The California Native Plant Society is a statewide non-profit organization of amateurs and professionals with a common interest in California's native plants. The Society, working with its local chapters, seeks to increase understanding and to preserve the rich heritage of the native flora for future generations. Membership is open to all. Individual memberships are \$45.00 per year. If you have questions concerning a new membership, renewal of a current membership, or if you wish to report a **change of address**, please contact the Membership Chairperson, CNPS, 3921 East Bayshore Road, Palo Alto, CA 94303 or email [membership@cnps-scv.org](mailto:membership@cnps-scv.org).

The *Blazing Star* web address: [www.cnps-scv.org](http://www.cnps-scv.org) . Acknowledgement: Anne Warren for the *Blazing Star* logo. Printed on recycled paper.